



The future of safe learning

COVID-19 Guidance

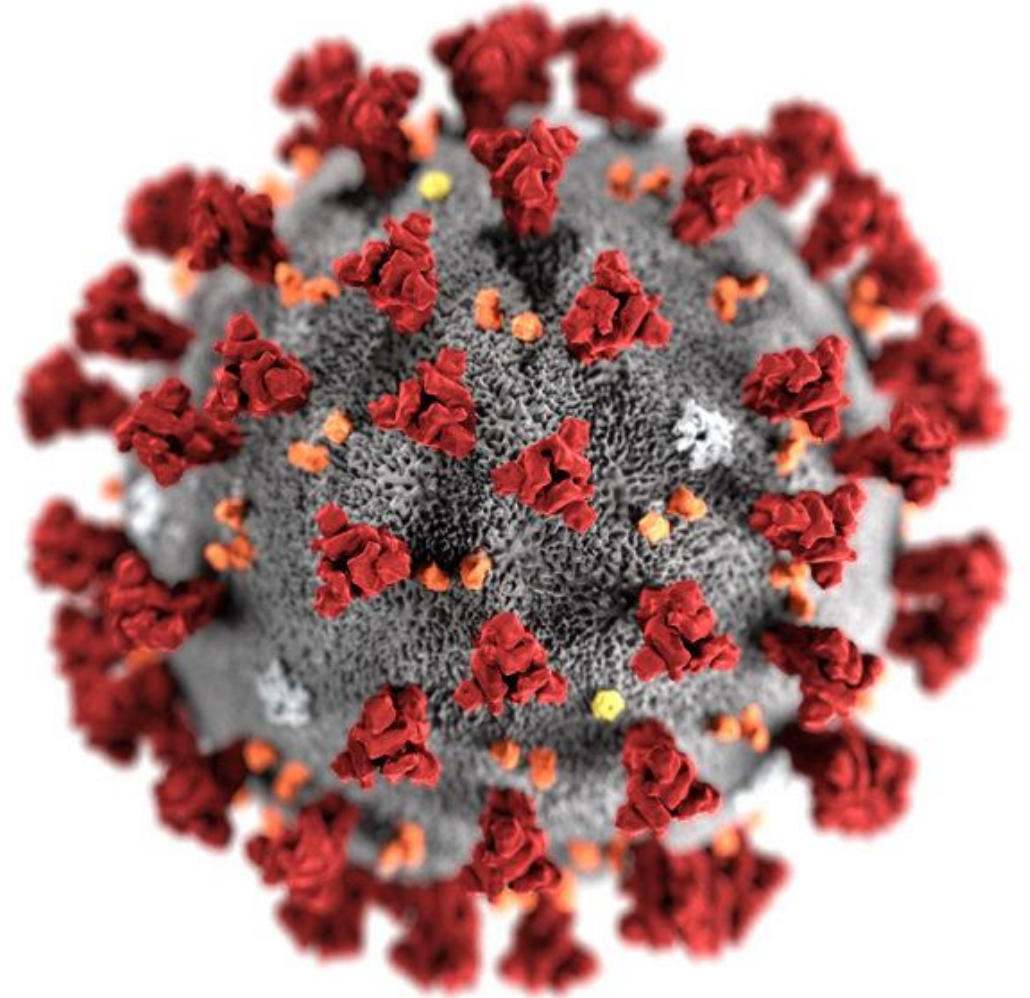


Risk assessment

STEP 1: Identify the hazard

→ Coronavirus

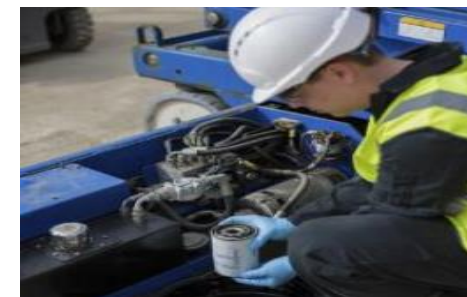
- Mainly transmitted through droplets generated when an infected person coughs, sneezes or speaks
- These heavy droplets quickly fall on floors or surfaces



STEP 2: Decide WHO may be harmed and HOW

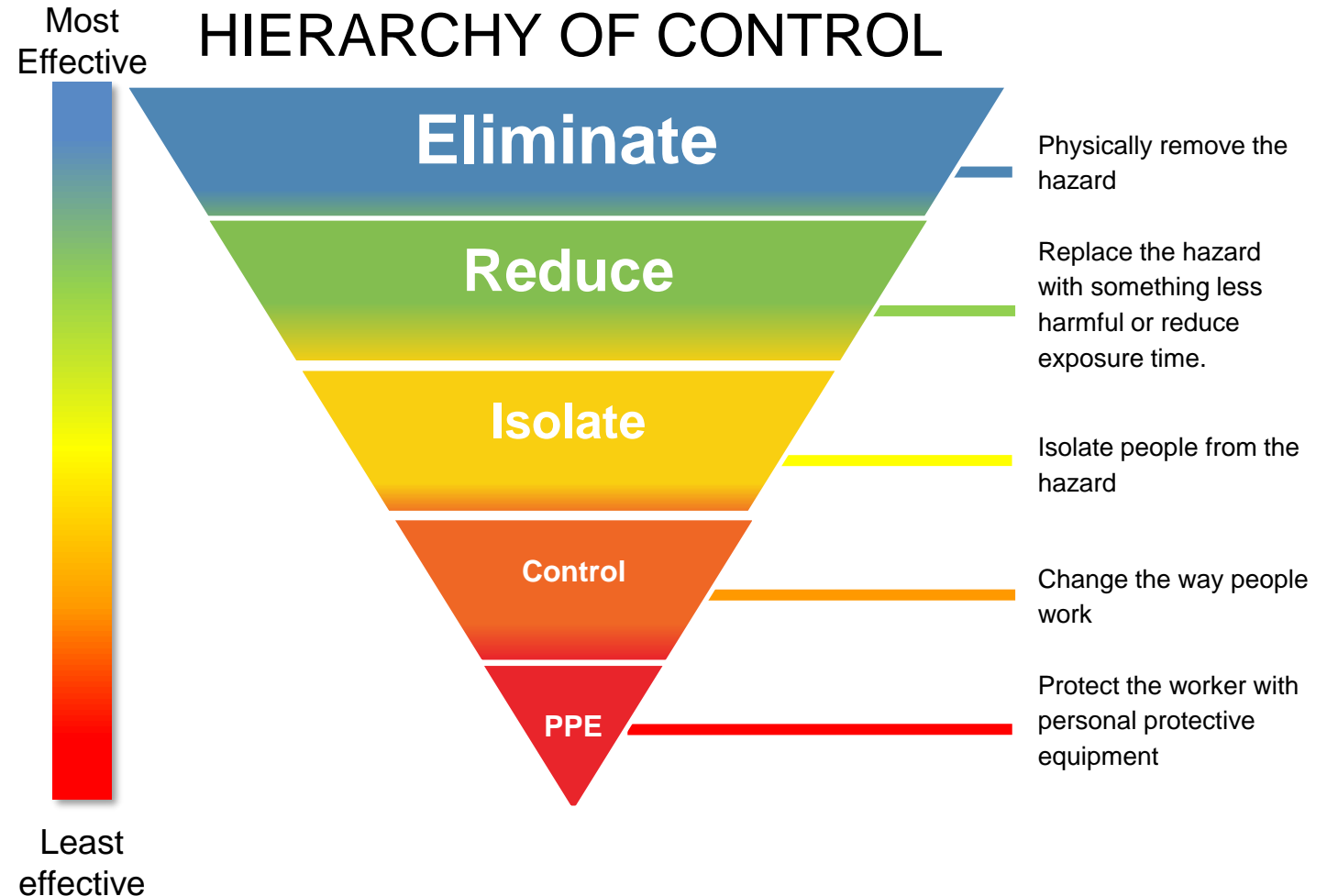
- Entering premises
- Rest breaks
- Theory session
- Practical training
- Leaving the premises

	Candidates	Instructor	Staff
→ Entering premises	✓	✓	✓
→ Rest breaks	✓	✓	✓
→ Theory session	✓	✓	
→ Practical training	✓	✓	
→ Leaving the premises	✓	✓	✓



STEP 3: Evaluate the risk and decided on precautions

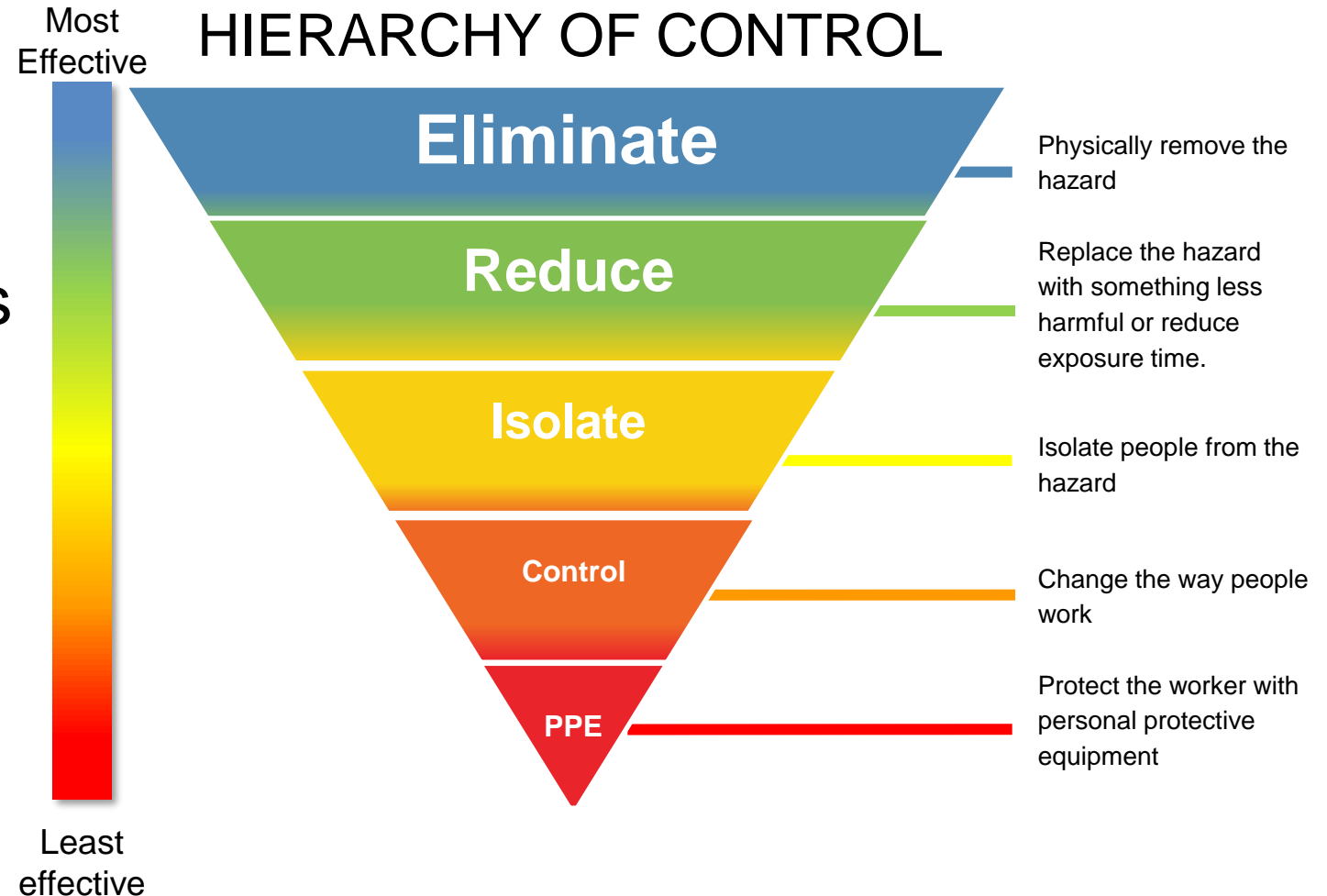
- Apply the most effective controls first
- Work down hierarchy of control



STEP 3: Evaluate the risk and decided on precautions

→ No new control measure should compromise existing Health and Safety measures

If an activity cannot be undertaken safely, it should not take place.

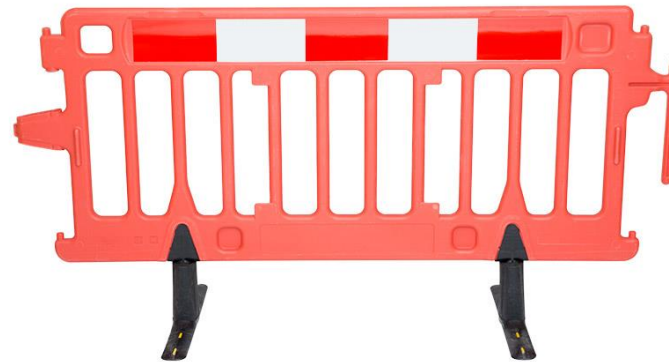


STEP 4: Document and implement precautions



STEP 4: Document and implement precautions

- Communicate
- Co-ordinate and co-operate with others
- Frequent reminders of controls
- Checks for compliance



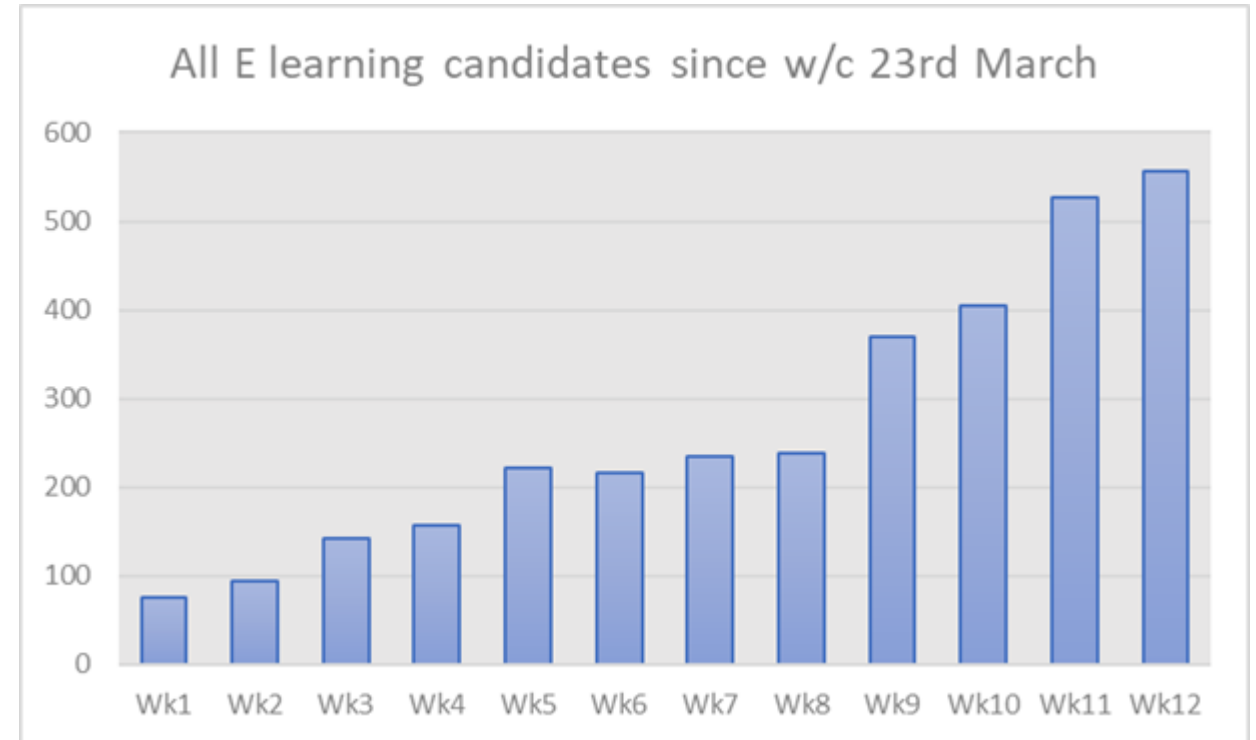
STEP 5: Review and update as necessary

- Consult and communicate with all interested parties
- Make improvements where possible
- Monitor people's health
- Monitor current advice
- Adapt work methods to changing situations or requirements



What can we do right now?

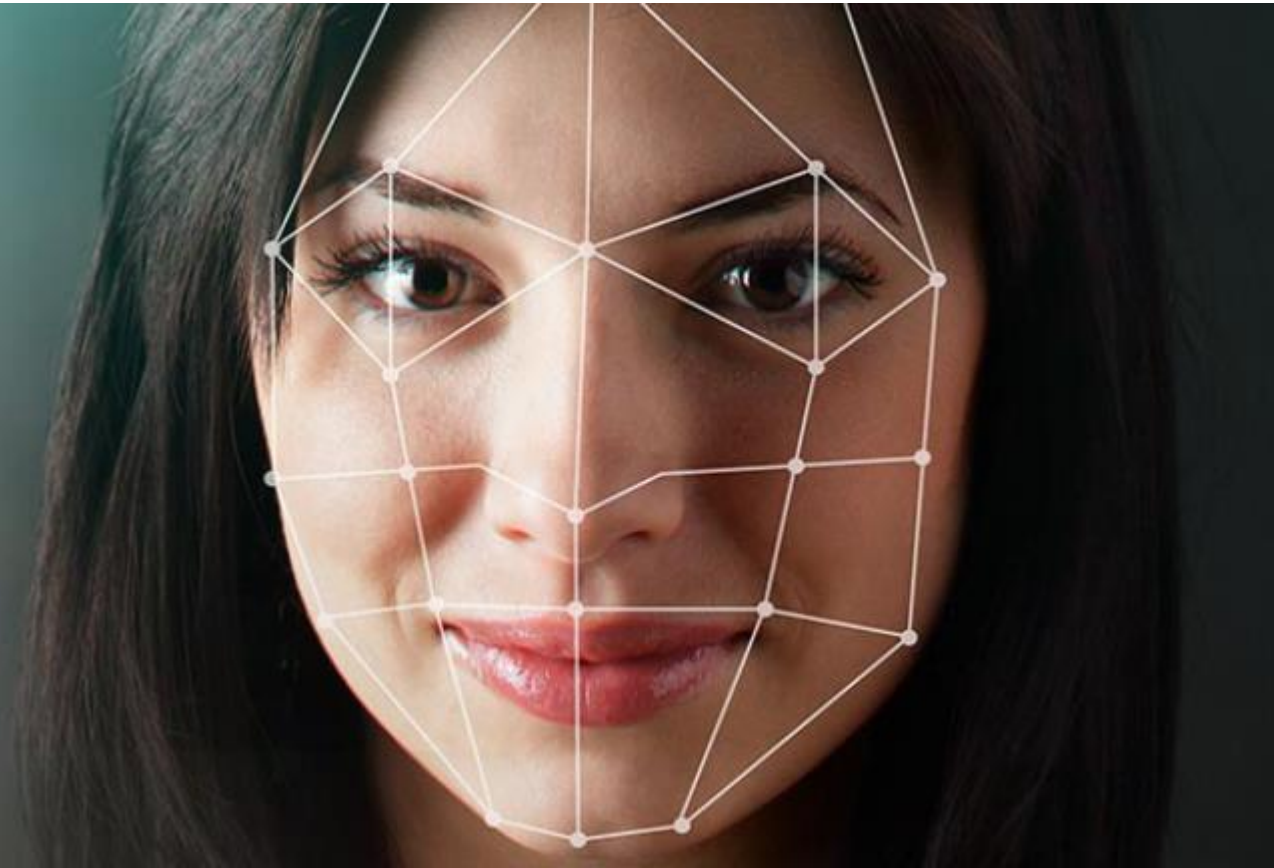
- Eliminate face to face requirements by:
- Using eLearning
- Using remote learning
- 90 day grace period for renewals



Eliminate



LMS Facial Recognition





looks like a face	99.9%
appears to be male	99.9%
age range	38 - 57 years old
smiling	68%
wearing eyeglasses	99.7%
not wearing sunglasses	99.6%
eyes are closed	56.1%
mouth is closed	97.2%
has a mustache	98.7%
has a beard	99.8%

Eliminate



→ Remote training





New Form



New Quiz



Untitled quiz

0 Responses



Hi Paul,

Welcome to Microsoft Forms!

Easily create surveys, quizzes, and polls.



Easily create surveys



Quickly create quizzes



Analyze data in Excel

Create a new form



Start a new form

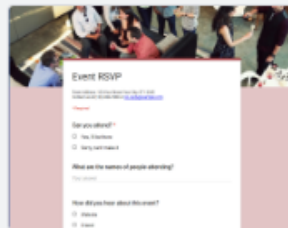
Template gallery



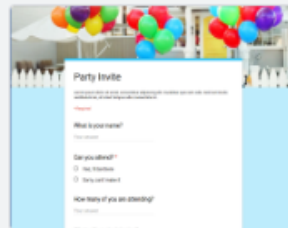
Blank



Contact Information



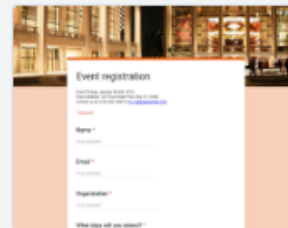
RSVP



Party Invite



T-Shirt Sign Up



Event Registration

Recent forms

Owned by anyone

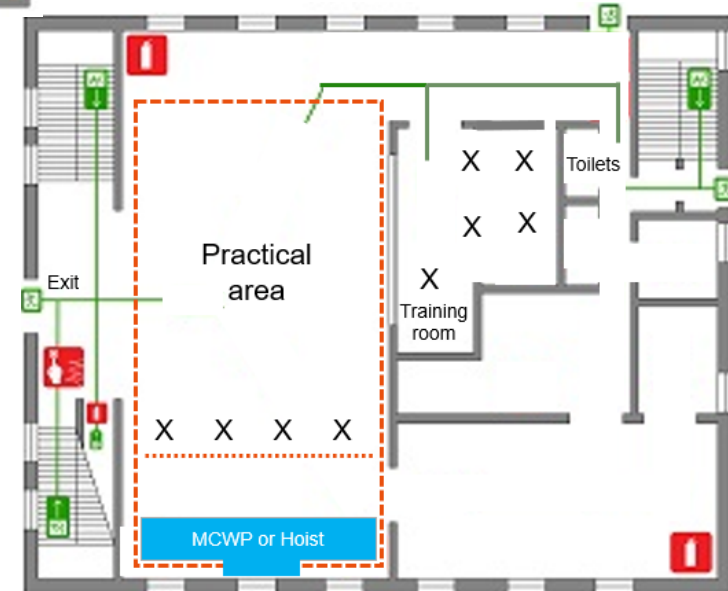
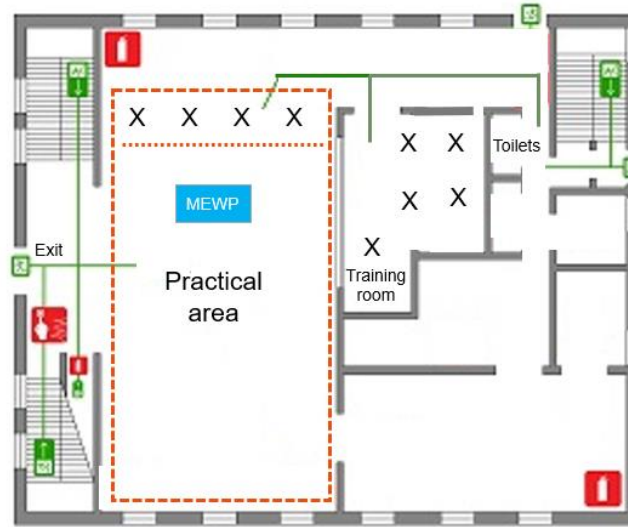


No forms yet

Click + to create a new form.

→ Ensure 2 metre social distancing:

- In the training room
- During transition
- In the MEWP, MCWP or Hoist practical area

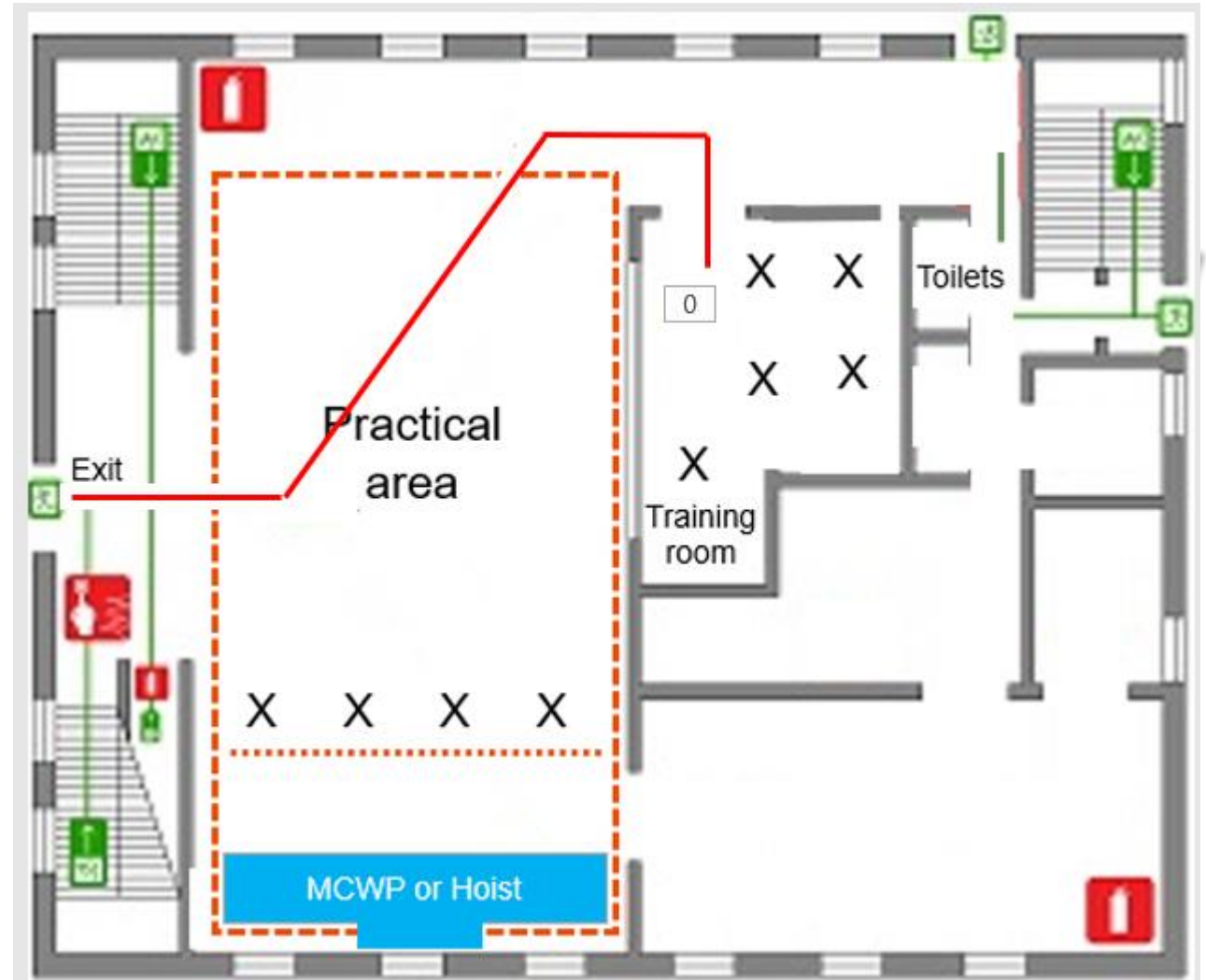


- Sanitiser should be available with the machine
- Candidates to sanitise before and after operating
- Candidates wait in predetermined designated area at 2 metre spacings
- PPE should not be shared



Completion of training

- Instructors will receive completed forms
- Check and exchange relevant information
- Candidates to leave following appropriate route while maintaining social distancing



Support

→ Follow the IPAF guidance document:

“COVID-19 Safe Operating Guidance Using MEWPs, MCWPs or Hoists”



Available at www.ipaf.org/resources

VIEW THE WEBINAR



IPAF Webinar COVID-19 Safe Operating Guidance



- It is mainly transmitted through droplets generated when an infected person coughs, sneezes or speaks
- These heavy droplets quickly fall on floors or surfaces



Watch later



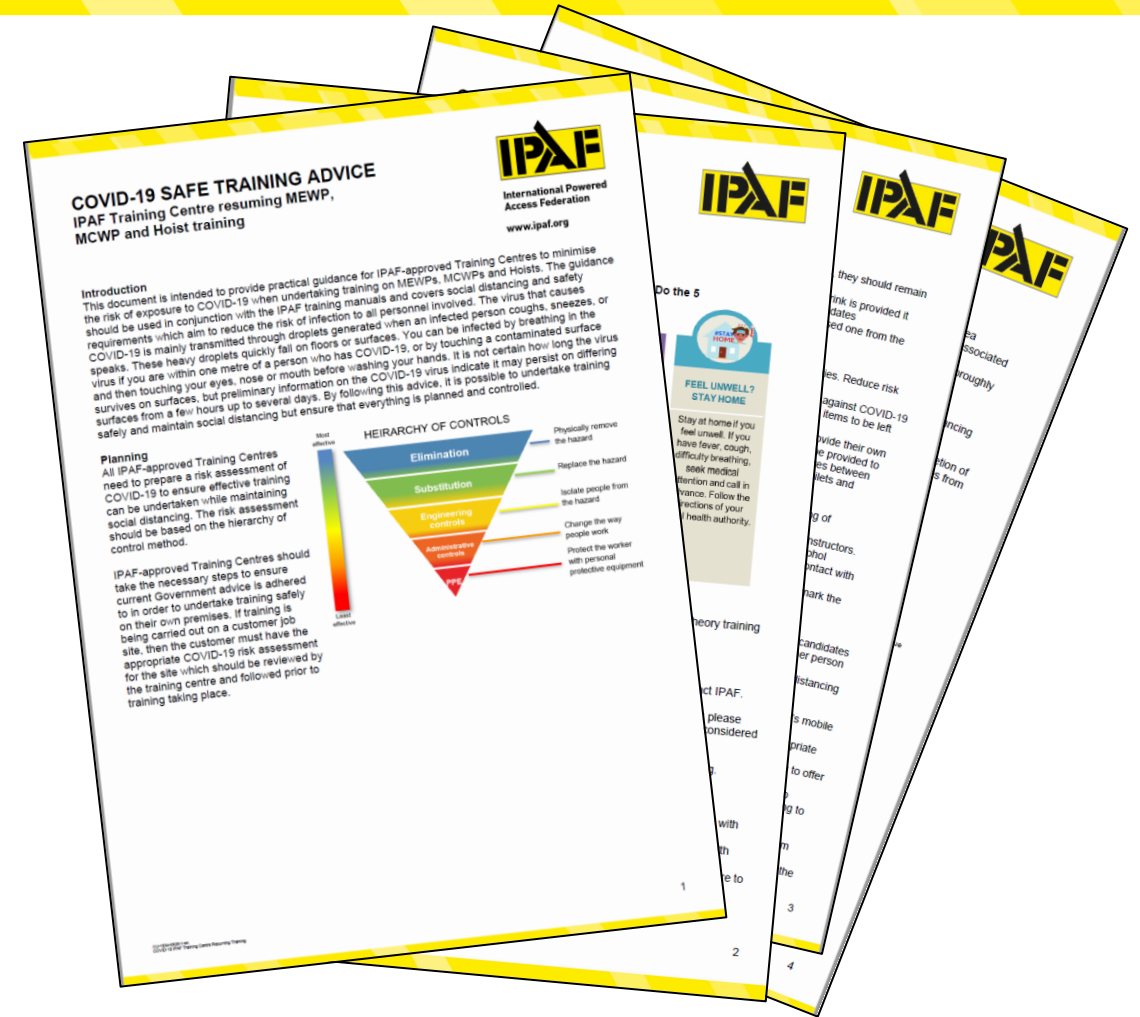
Share



Available at www.ipaf.org/resources

→ Follow the IPAF guidance document:

“COVID-19 Safe Training advice”



→ Follow the IPAF guidance document:

“COVID-19 IPAF Instructor-led Remote Training Guidance”



Available at www.ipaf-training.com

Thank you for listening



www.ipaf.org

Q & A



www.ipaf.org

Thank you for joining



IPAF Webinar
series kindly
sponsored by

sponge[®]

serious:labs[®]

SKYJACK[™]
simply reliable

Contact us at: training@ipaf.org